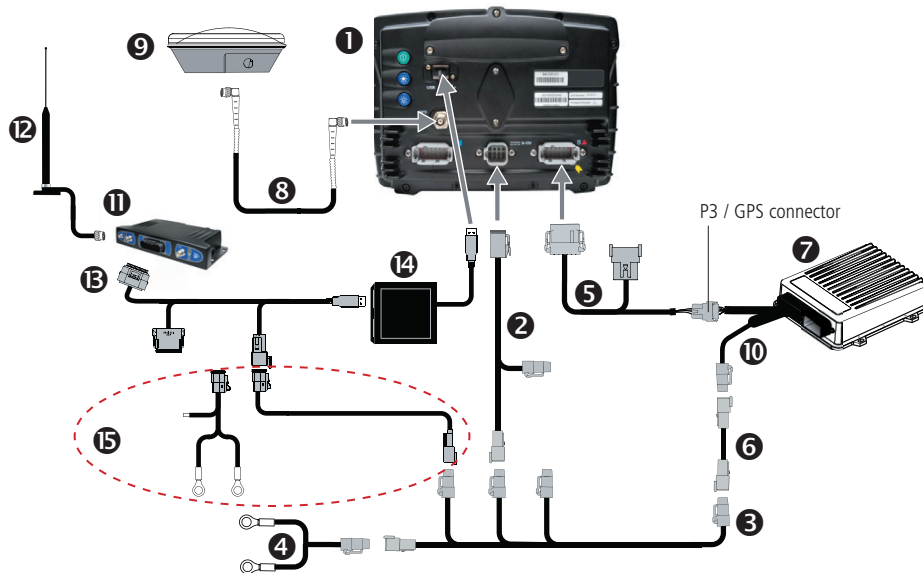


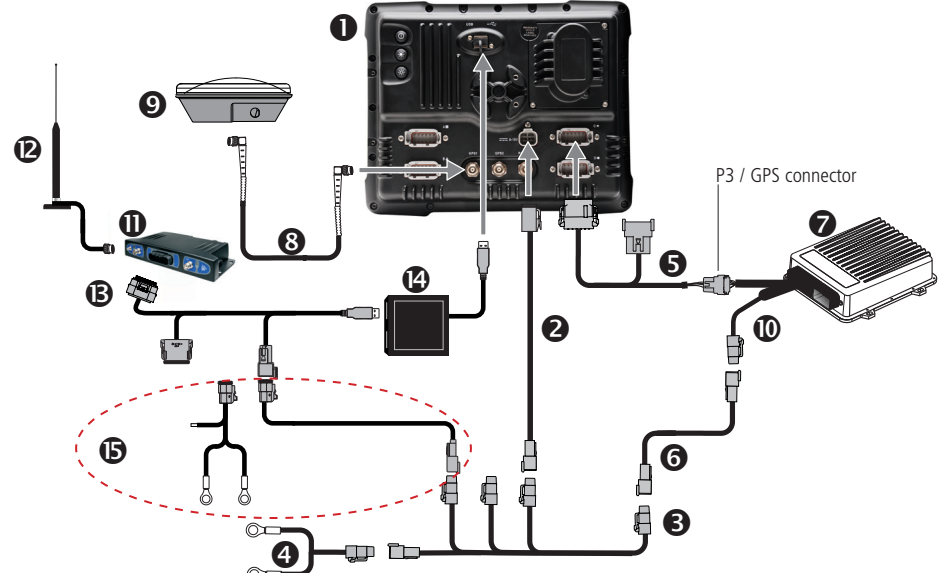
DCM-300 Modem Quick Start Guide

This guide provides step-by-step instructions for a quick setup of the Trimble® DCM-300 modem.

CFX-750 display



FmX integrated display



Item	Description	P/N	Item	Description	P/N
1	CFX-750™ display	94100-01	9	AG25 GNSS antenna	77038-00
2	CFX-750 power cable	77282	10	Main NavController II cable	54601
3	CFX power cable with relay and switch (power bus)	67259	11	DCM-300 modem	83x00-10
4	Basic power cable	67258	12	DCM 300 cellular antenna	72122 + 51227
5	CFX to NavController II cable with port replicator	75741	13	DCM-300 to display cable	82026
6	2-pin DTM to 2-pin DT power adapter	67095	14	USB hub ¹	
7	NavController II	55563-00	15	DCM-300 power harness ²	
8	8 m GPS TNC / TNC RT angle cable	76442			

Item	Description	P/N	Item	Description	P/N
1	FmX® integrated display	93100-01	9	AG25 GNSS antenna	77038-00
2	FmX power cable	66694	10	Main NavController II cable	54601
3	FmX power cable with relay and switch (power bus)	67259	11	DCM-300 modem	83x00-10
4	Basic power cable	67258	12	DCM 300 cellular antenna	72122 + 51227
5	FmX to NavController II cable with port replicator	75741	13	DCM-300 to display cable	82026
6	2-pin DTM to 2-pin DT power adapter	67095	14	USB hub ¹	
7	NavController II	55563-00	15	DCM-300 power harness ²	
8	8 m GPS TNC / TNC RT angle cable	76442			

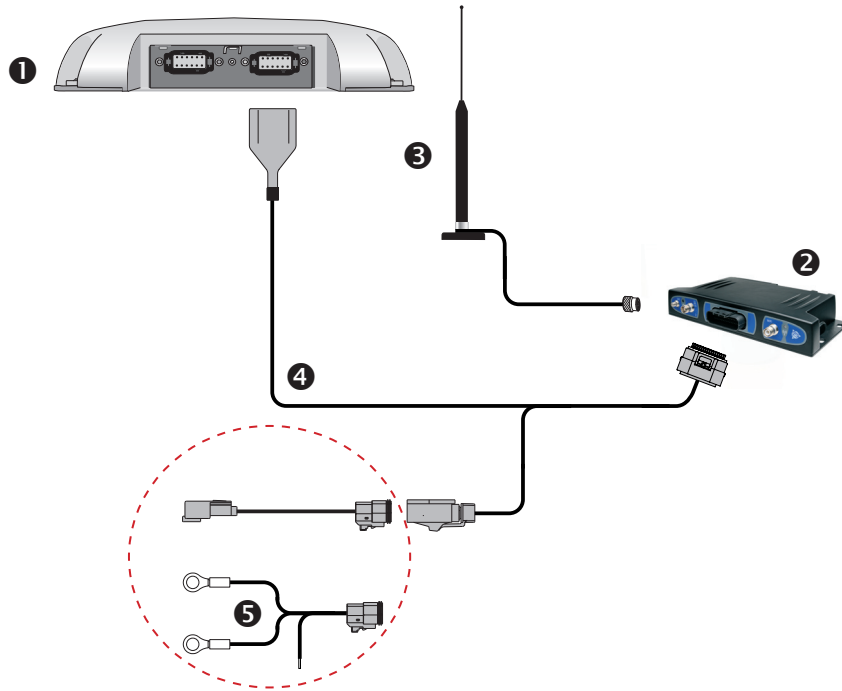
¹ The USB hub included in the P/N 82026 harness must be used for the DCM-300 modem to work with the FmX / CFX-750 displays.

² The P/N 82026 cable has two power harness options; one for connecting to a power bus cable, and another for connecting to machine power. The harness for connecting to machine power has leads for connecting to power, ground, and ignition. The ignition lead must be connected to a switched +12 V source for the DCM-300 to operate correctly when this harness option is used.




- Wireless signals can interfere with GPS reception. For best performance, Trimble recommends mounting the DCM-300 cellular antenna at least 1 meter or more apart from the GPS antenna.
- Ensure that the power is not turned on when connecting the P1 radio connector on the P/N 82026 cable to the DCM-300 modem.

AgGPS 262 receiver



Item	Description	P/N	Item	Description	P/N
1	AgGPS 262 receiver	55500-xx	4	DCM-300 to receiver cable	82133
2	DCM-300 modem	83x00-15	5	DCM-300 power harness ¹	82133
3	DCM 300 cellular antenna	72122 + 51227			

¹The P/N 82133 cable has two power harness options; one for connecting to a power bus cable, and another for connecting to machine power. The harness for connecting to machine power has leads for connecting to power, ground, and ignition. The ignition lead must be connected to a switched +12 V source for the DCM-300 modem to operate correctly when this harness option is used.

 Wireless signals can interfere with GPS reception. For best performance, Trimble recommends mounting the DCM-300 cellular antenna at least 1 meter or more apart from the GPS antenna.

Note: The included GPS patch antenna (P/N 66800-52) is only used for the Asset Tracking service and is not required for VRS™ or data transfer functionality.

Display and receiver compatibility

The DCM-300 modem is compatible with the following displays and receivers:

- AgGPS® 262 receiver: Requires receiver firmware version 2.0 or higher.
- FM-1000™ integrated display: Requires display firmware version 5.0 or higher.
- FM-750™ display: Requires display firmware version 1.05 or higher.

Note: Please see the *FmX Integrated Display User Guide* / *CFX-750 Display User Guide* for details on configuring the DCM-300 modem.

Status messages



DCM-300 status	Green LED	Amber LED
Power On & Booting	Solid	Off
GPS Signal	Blink ²	N/A
Cellular Link	N/A	Solid
Wi-Fi Link	N/A	Blink ²
Wi-Fi and Cellular Link	N/A	Slow Blink ¹
Poor or no Wireless Signal	N/A	Fast Blink ³
Poor or no GPS Signal	Fast Blink ³	N/A
System Ignition Off / Sleep Mode	Slow Blink ¹	Off

¹ Slow blink is 3 s on/3 s off. /

² Blink is 1 s on/1 s off.

³ Fast blink is 200 ms on/200 ms off



P/N 83400-00-ENG

© 2011, Trimble Navigation Limited. All rights reserved. Trimble, the Globe and Triangle logo, AgGPS, and FmX are trademarks of Trimble Navigation Limited, registered in the United States and in other countries. CFX-750, FM-1000, FM-750, and VRS are trademarks of Trimble Navigation Limited. Version 1.00, Rev A (April 2011).