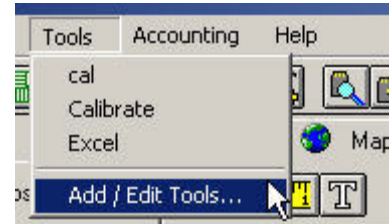


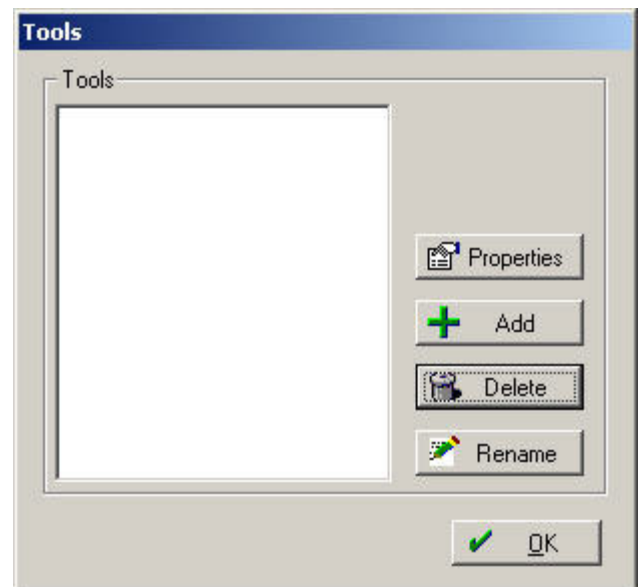
Using the Tools Menu

The Tools menu can be used to set up a shortcut to any other program running on your computer. Examples of useful programs might include the Calibrate Program and Microsoft Excel.

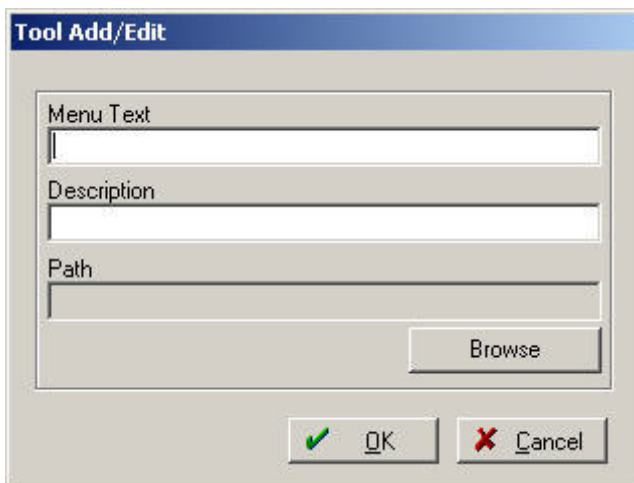
The first step is to left click on the Tool Menu and select **Add/Edit Tools**.




In the Tools box that appears, select the **Add** button.

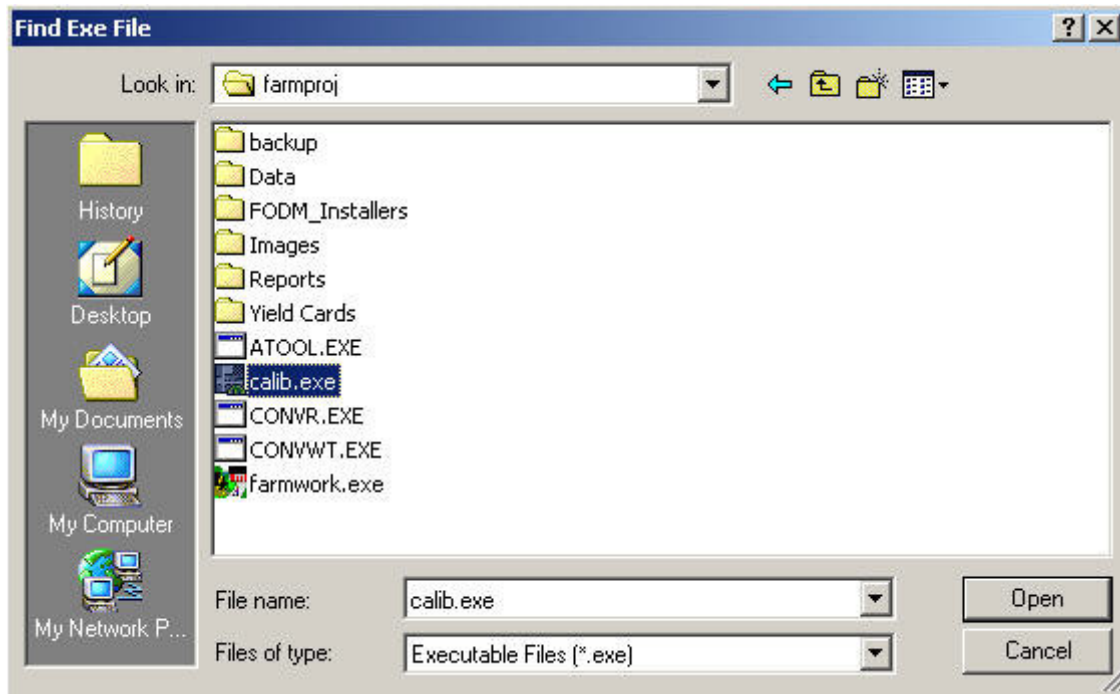


This will bring up the Tools Add/Edit box where the Menu Text (wording that will appear in the drop down menu), Description (optional box that can be used to better describe the program), and Path (place where the program is located) is displayed.



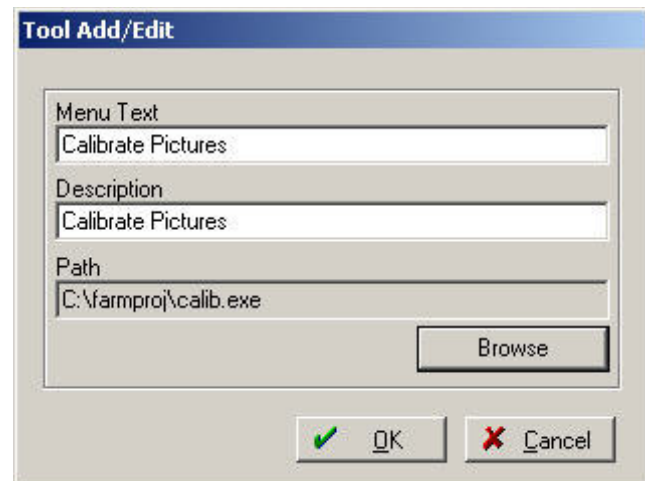
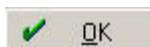
Once the Menu Text and Description (optional) are entered, click on the **browse** button  to select the location of the program to be added to the menu.

In this example we will be adding the Calibrate program. The typical location of this program is c:/farmproj/calib.exe. Once the program file is selected, click the **Open** button.



Once you have completed the Tool Add/Edit box.

Click on the **OK** button.



After the programs are added to the list of Tools, you will be able to run the appropriate program by left clicking on that menu item in the **Tools Menu**.

