

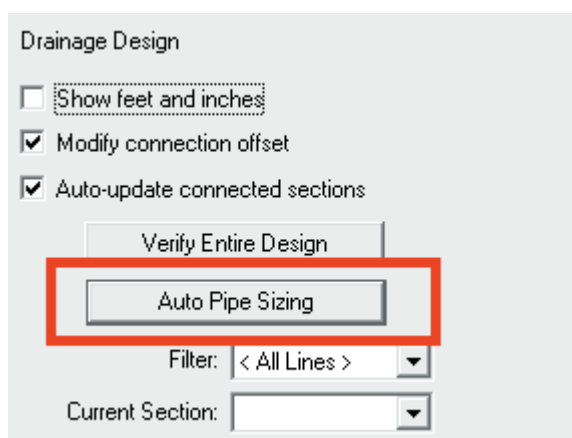
May 2014

Farm Works Software Solutions: Auto Pipe Sizing

This FAQ describes the procedure for auto pipe sizing in the Farm Works™ Surface software.

Note: Before starting this procedure you must create a drainage design. See the Farm Works Surface Software User Guide.

1. Click **Auto Pipe Sizing**:



This document is for informational purposes only and is not a legally binding agreement or offer.
Trimble makes no warranties and assumes no obligations or liabilities hereunder.

Farm Works Information Management, A Division of Trimble, P.O. Box 250, Hamilton, IN 46742, USA

© 2014, Trimble Navigation Limited. All rights reserved. Trimble, the Globe & Triangle Logo, and Farm Works Software are trademarks of Trimble Navigation Limited, registered in the United States and in other countries. Farm Works is a trademark of Trimble Navigation Limited. All other trademarks are the property of their respective owners. OSCAR ID: 32091



2. Select the correct *Drainage Coefficient* (required amount of water to be removed each day):

Automatic Pipe Sizing

Parameters

Drainage Coefficient 1/2

Select Pipe Supplies

- 4" Plastic
- 5" Plastic
- 6" Plastic
- 8" Plastic
- 10" Plastic
- 12" Plastic
- 12" Dual Wall
- 15" Plastic
- 15" Dual Wall
- 18" Dual Wall

Minimum Size 4 in

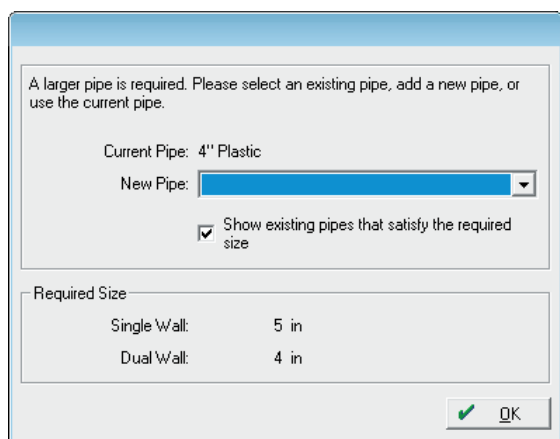
Calculate Sizes -->

3. Select the correct pipe supplies needed for the particular design.

Note: Pipe supplies must have a "Type" in order for them to work in the Auto Pipe Sizing.

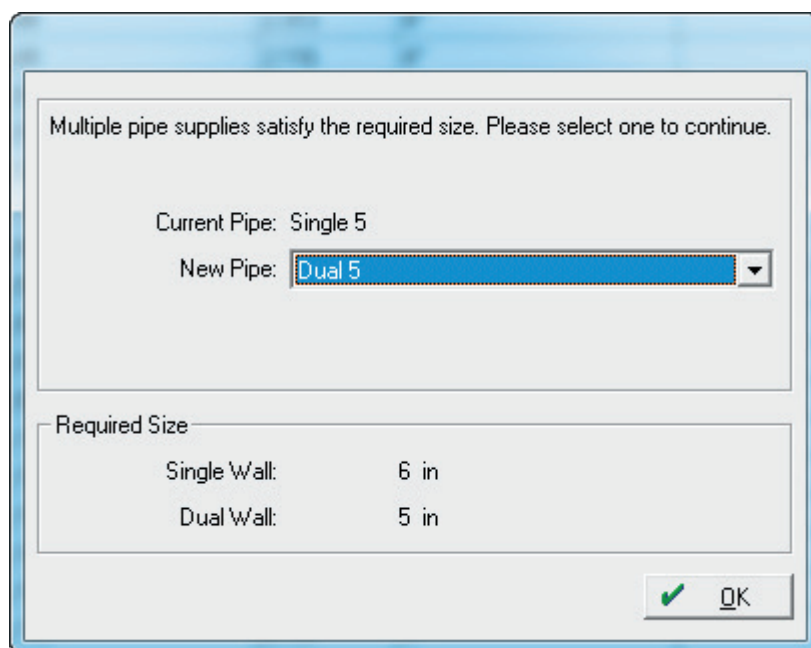
4. Click **Calculate Sizes**.

- If a larger pipe size is required than the pipe you selected, the program will notify you that a larger pipe is required. You will need to either confirm that you want to use the previously selected size or select a different size. If you select the *Show existing pipes that satisfy the required size* option, the drop-down list will list all available pipes that will work:



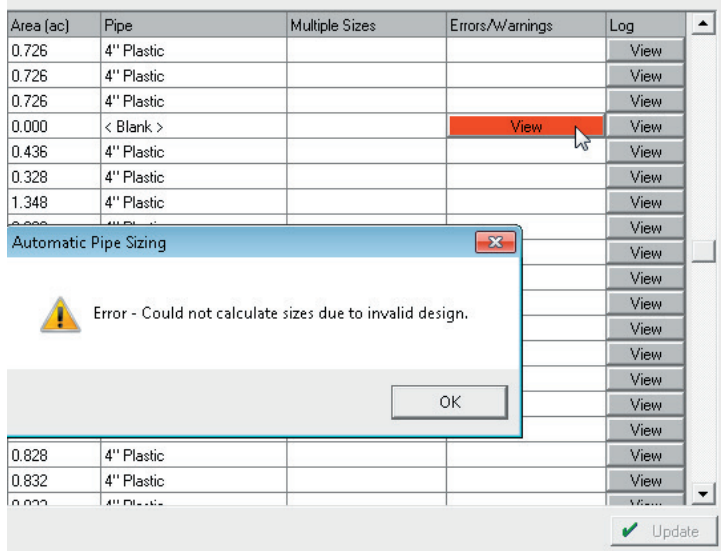
- Select the correct size then click **OK** or select **<Add Pipe Supply>** to create a new pipe for the required size.

If there are different pipes (sizes) that could be used, a message will appear prompting you to select the size you want to use:

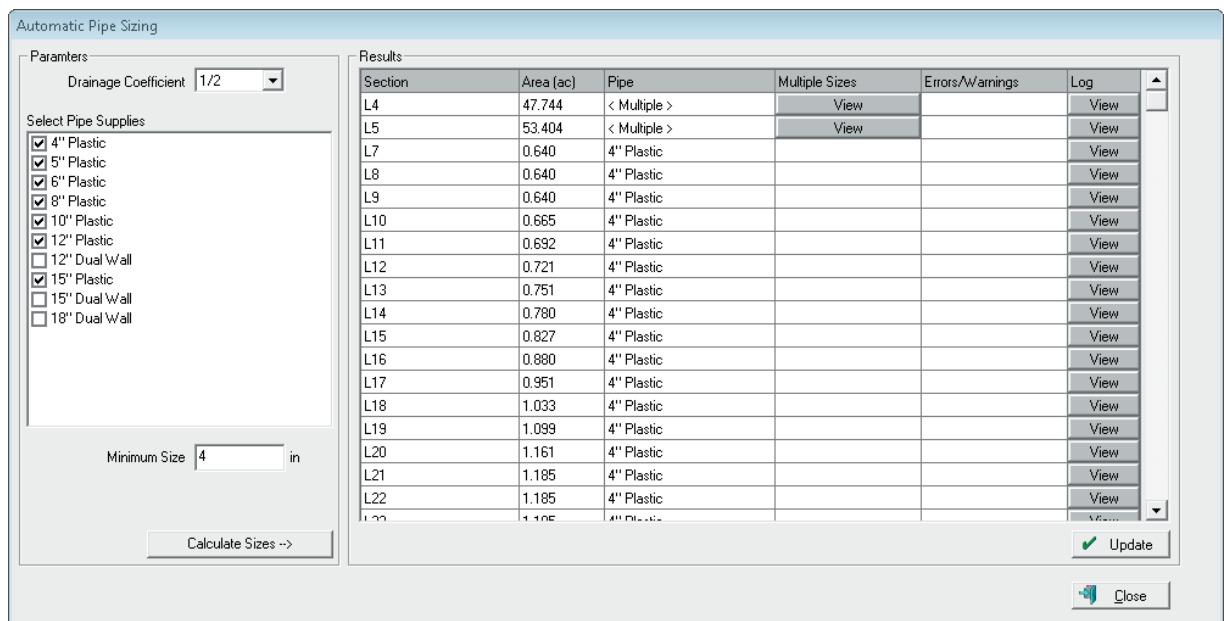


- Once you have calculated the sizes, the program lists the section lines in the Results screen:

Field	Description
Section	Section Name given to the line when designed.
Area (ac)	Area in acres or hectares that drains into that section.
Pipe	List the name of the pipe selected for each section.
Multiple Sizes	A View button appears for all sections that require multiple sizes of pipe. Click View to view details of the multiple pipe sizes.

Field	Description
Errors/Warnings	<p>A View button appears for lines that have errors or warnings. Warnings are shown in yellow, errors in red. Click View to view details of the error or warnings.</p> 
Log	<p>Click View to display the results of the calculation for each section. These results include any selections made for pipe sizes that were different from the calculated size.</p>

8. Click **Update** to assign the pipes to the sections:



9. Click **OK** to close the *Auto Pipe Sizing* screen and return to the design screen. If you click a section line, the correct pipe appears on the left.