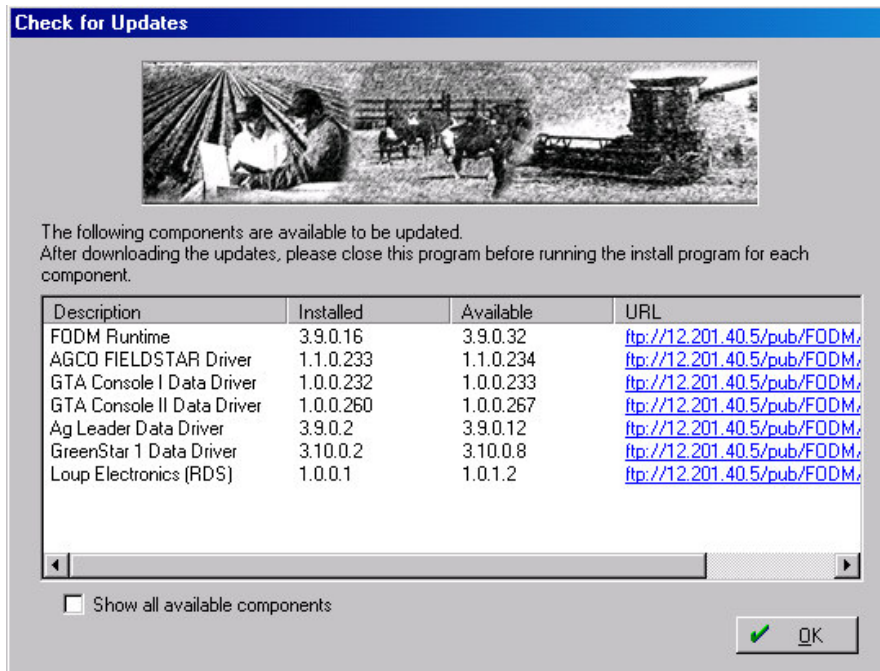
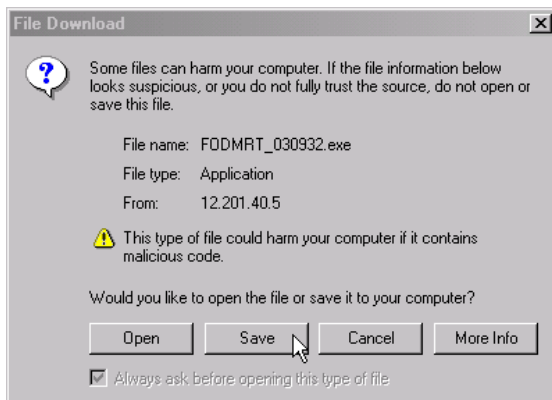


Updating Yield Monitor Data Drivers (FODDs)

To update the yield monitor data drivers in Farm Works, start by selecting the Help Menu and then Check for Updates. This will display the Check For Updates screen, if there are newer versions of the software and or data drivers available for download they will be listed here.



To begin the download process left click on the link listed under URL. When the File Download screen appears select the option to Save. Save these files in a location that can be easily accessed.



Once all the files have been saved, you will need to close all running programs and restart the computer. Once the computer has been restarted, locate the saved Data Drivers. Double left click on the saved file. If the files downloaded include The FODM Runtime, run this file before any of the other Data Drivers. *Note: Some drivers may require that the computer be restarted again after installation.*