

09 August 2013

Installing an Optional Microsoft GPS Update disables Yuma 2 Internal GPS

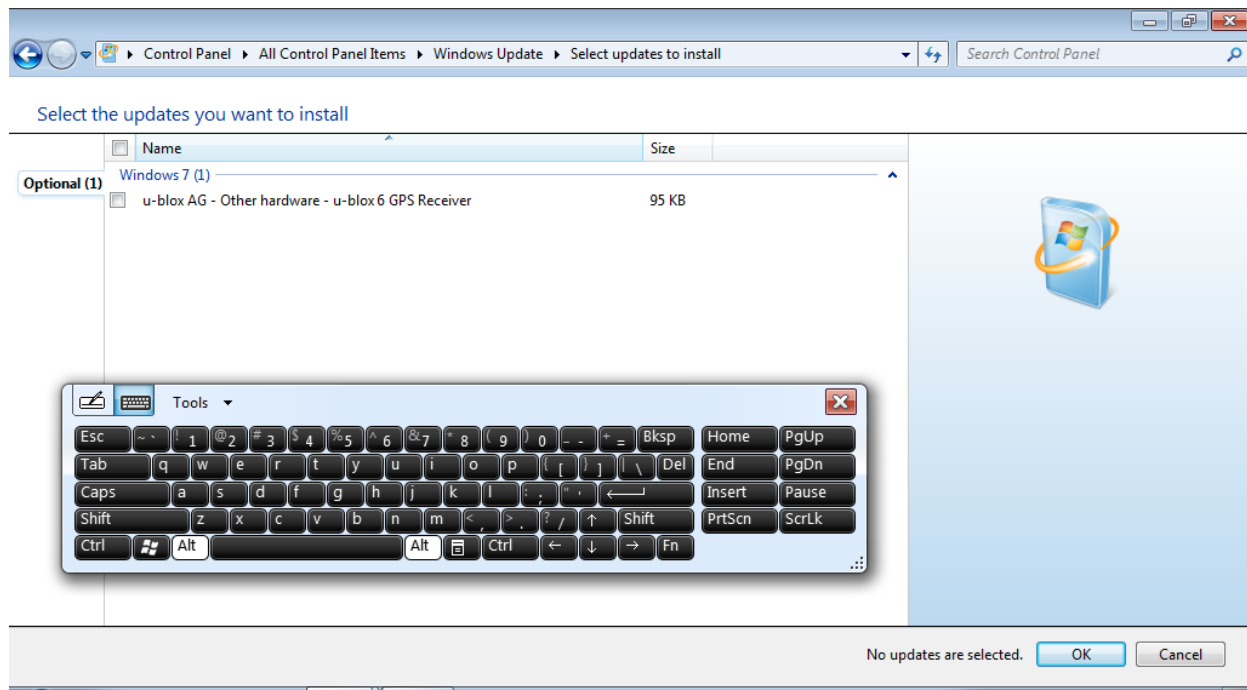
Affected Products

All variants of the Trimble Yuma 2 tablet (also known as the Trimble tablet) running Windows 7 Professional.

Summary

WARNING: DO NOT install the following optional update in Windows Update: **‘u-blox AG – Other Hardware – u-blox 6 GPS Receiver’**, it will prevent applications from getting a GPS fix.

The update is listed under Start > Control Panel > System & Security (or System, depending on your view) > Windows Update > Check for updates (Control Panel\All Control Panel Items\Windows Update>Select updates to install):



This document is for informational purposes only and is not a legally binding agreement or offer. Trimble makes no warranties and assumes no obligations or liabilities hereunder.

Trimble Navigation Limited, Mobile Computing Solutions Division, 4100 SW Research Way, Corvallis, OR 97333-1066, USA

© 2012, Trimble Navigation Limited. All rights reserved. Trimble and the Globe & Triangle logo are trademarks of Trimble Navigation Limited, registered in the United States and in other countries. All other trademarks are the property of their respective owners.



Problem

If you have already installed this u-blox driver update and attempt to connect to the GPS module using Trimble or 3rd party software to gain a satellite fix, nothing will happen as shown in the photo below using the Trimble GPS Tray utility (Start > All Programs > Trimble > GPS Tray > GPS System Tray Application):



Solution

If you have already installed this update, you can perform a Windows System Restore which will completely remove the new u-blox driver that gets installed via Windows Update. Performing a Windows System Restore will re-enable the GPS COM port. It will NOT affect your documents.

To perform a Windows System Restore, browse to:

- **Control Panel\All Control Panel Items\Recovery**, and tap on '**Open System Restore**'.

Choose the entry for the Windows Update that installed the u-blox driver, and follow the instructions in the wizard.

If you have not already installed the u-blox update, you can hide it by tapping and holding the stylus on the update entry until the circle completes, then lifting up, and choosing 'Hide update'.

There is a work-around if you choose not to do a Windows System Restore. You can manually select the correct GPS COM Port in your application to connect with the GPS module. The correct COM Port to open with the new u-blox device driver is likely to be COM13. However, the value may be different depending on what other hardware has been connected to the unit. The COM Port value, once identified, is likely to remain the same.